

ONE PLATE FOR *LISTERIA*

PLEASE REFER TO EACH PRODUCT'S TECHNICAL SPECIFICATION SHEET BEFORE COMPLETING WORKFLOW



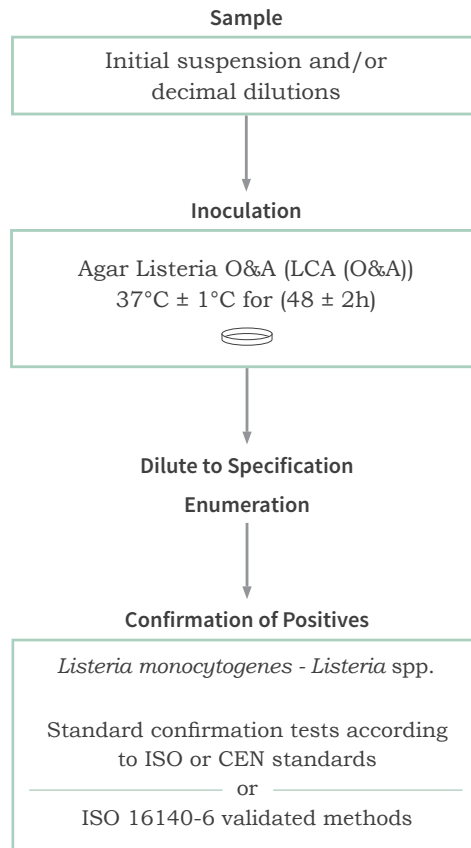
Workflow



One Plate for *Listeria*

MicroVal Validation Certification 201 91R89

A rapid test for the fully quantitative enumeration of
Listeria spp. and *Listeria monocytogenes*



Please refer to the relevant validation materials for full details on
the validated One Plate for *Listeria* protocols.



One Plate for *Listeria*

Ordering Information

NCM0015*	Buffered Peptone Water (ISO) DCM
NCM3401	Buffered Peptone Water (ISO) ready-to-use bagged media
NCM3202	Buffered Peptone Water (ISO) ready-to-reconstitute media
NCM0202*	LESS Plus DCM
NCM3400	LESS Plus ready-to-use bagged media
NCM3206	LESS Plus ready-to-reconstitute media
NCM1004	Listeria Chromogenic Agar (O&A) DCM**
NCM3000	Listeria Chromogenic Agar (O&A) pre-poured plates
NCM3708	Listeria Chromogenic Agar (O&A) re-melt bag
NCM4001	Listeria Selective Diagnostic Supplement
NCM4002	Listeria Chromogenic Selective Supplement
NCM0040	Blood Agar Base DCM
NCM3800	Listeria Carbohydrate Confirmation Broths

*Code should be accompanied by the letter A, B or C to confirm desired pack size. 'A' represents 500 g, 'B' 5 Kg and 'C' 10 Kg e.g. NCM1004A.

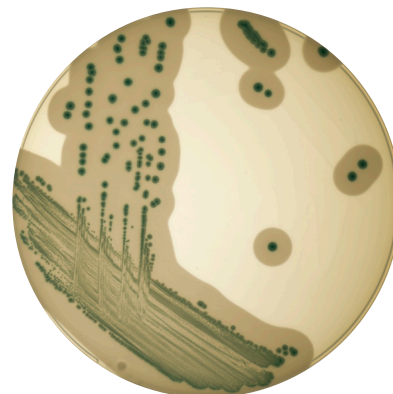
**Supplements required

NEOGEN® has developed and validated an innovative workflow that allows for the enumeration of *Listeria* spp. and *Listeria monocytogenes* using just one agar plate. Our revolutionary One Plate for *Listeria* (OP-L) workflow means that you can go from using four agar plates, as shown in ISO 7218, to using just one while maintaining sensitivity and accuracy. Not only does the OP-L method show equivalent results to the ISO 11290 standard, it saves valuable time, space and costs, providing a refined testing procedure.

Test With Confidence

The OP-L workflow has been MicroVal certified as an alternative method to ISO 11290-2, for food and environmental samples according to ISO 16140-2. The validation proved that the One Plate for *Listeria* method provides equivalent results to the ISO 11290 reference method, showing that it is not necessary to use four plates according to ISO 7218 when following NEOGEN's OP-L workflow. One Plate for *Listeria* can therefore be used to confidently quantify *Listeria* spp. and *Listeria monocytogenes* while streamlining the testing workflow and improving efficiency. When dealing with heavily contaminated samples confirmation can be carried out after only 24 hours of incubation which also allows for faster reporting and quicker corrective action.

As well as drastically reducing media and labour requirements, the MicroVal certified OP-L workflow incorporates our high quality chromogenic media which presents easy to interpret colonies of *Listeria* spp. and *Listeria monocytogenes* to simplify analysis.



NOTE: Pre-poured plates may be subject to shipping restrictions. Contact us for further details.